

PRORURAL+



7th NRNs' Meeting

Ponta Delgada, 15 - 17 march 2017



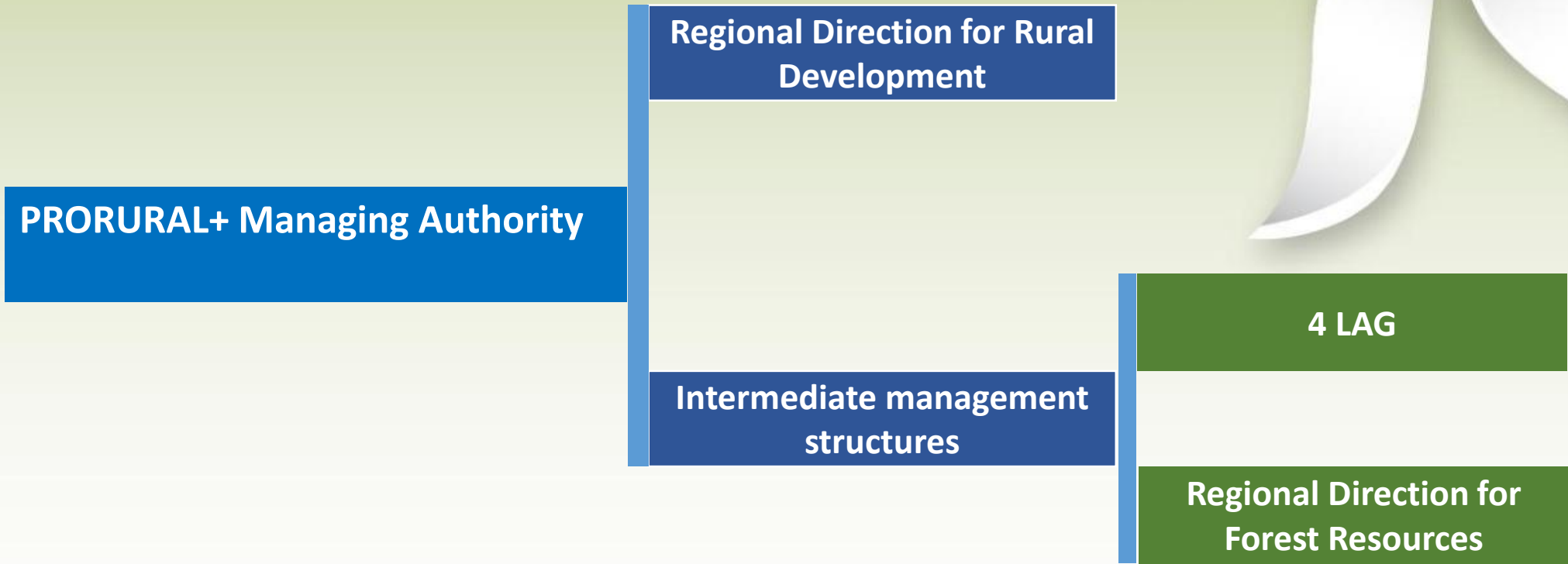
Governo dos Açores



UNIÃO EUROPEIA

Fundo Europeu Agrícola
de Desenvolvimento Rural
A Europa investe nas zonas rurais

PRORURAL+



PRO RURAL +

Program Allocation (2014-2020)

Public Expenditure	340.4 millions €
EAFRD (85%)	295.3 millions €



PRORURAL+



Implementation of the Program

Approval: February 2015

It is divided in 20 measures

N. Changes – 3 (the last one to be approved by the EC)

	N.	EAFRD (€)
Notices published to date	153	158.361.029,78
Investments applied (investment and areas)	14.526	258.457.760,07
Investments approved (investment and areas)	13.679	185.256.838,96

PRORURAL+

Measures with > n. of beneficiaries

Measures	N. beneficiaries	EAFRD (€)
M13 -Payments to areas facing natural or other specific constraints	9.925	46.042.524,62
M10 (10.1) –Agro-environment-climate	2.675	54.979.500,04
M04 - Investments in physical assets	841	112.685.522,64
M19 – Community Based Approach to Local Development	472	26.094.812,44
M08 – Investments in forest area development and improvement of the viability of forests	286	6.146.167,29
M06 (6.1) – Establishment of young farmers	169	5.476.720,00

PRORURAL+

Measures with < n. of beneficiaries

Measures	N. beneficiaries	EAFRD (€)
M15 (15.1) – Forest-environmental and climate services and forest conservation	52	1.380.277,43
M11 – Organic farming	34	571.331,73
M01 – Knowledge transfer and information actions	16	533.016,44
M10 (10.2) – Conservation of genetic resources	9	931.078,92
M20 – Funding technical assistance	5	318.401,99
M16 (16.2) – Co-operation	3	337.169,25
M05 – Natural disasters and introduction of appropriate prevention actions	3	45.503,90

PRORURAL+

Measures WITHOUT beneficiaries

Measures
M01 (1.3) - Knowledge transfer and information actions
M02 – Advisory services
M03 – Quality Schemes
M09 – Setting-up of producer groups and organizations
M16 (16.3, 16.4 e 16.5) - Co-operation

PRORURAL+



Measures according to ease/difficulty of implementation

PRORURAL+

Competitiveness of the Agroforestry Complex			Environmental Sustainability	Dynamics of Rural Territories
P1	P2	P3	P4 P5	P6
<p>M01 - Transfer knowledge and information actions</p> <p>M02 - Counselling and advising services and agricultural management services on farms</p> <p>M16 - Cooperation</p>	<p>M01 - Transfer knowledge and information actions</p> <p>M02 - Counselling and advising services and agricultural management services on farms</p> <p>M04- Investments in physical assets</p> <p>M06 - Development of farms and agricultural enterprises - Installation of young farmers</p> <p>M16 - Cooperation</p>	<p>M03 - Regimes de qualidade para os produtos agrícolas e géneros alimentícios</p> <p>M05 - Restoration of the agricultural production potential affected by natural catastrophes and catastrophic events, as well as an introduction of appropriate prevention measures</p> <p>M09 - Creation of Producer Grouping and Producer Organizations</p> <p>M17 - Risk management</p>	<p>M04 -Investments in physical assets – Renewable energy</p> <p>M08 - Investment forest areas and viability of forests</p> <p>M10 - Agro-environment climate</p> <p>M11 - Organic agriculture</p> <p>M15 - Environmental and climate services and forest conservation</p> <p>M13 - Payments related to zones subordinate to natural conditions or other specific conditions</p>	<p>M19 - Support for local development of community based LEADER</p>

PRORURAL+



Concerns regarding achieving goals
Fields

High Risk

complex agri-forest
P1, P2 e P3

No risk

Environmental Sustainability
P4 e P5

Dynamic of rural areas
P6

PRORURAL+



<https://youtu.be/HxPSANfSJ2E>