

Name of Rural Network

Nacionalna mreža za
podeželje

Contact Details

Address: Dunajska 22, SI-1000 Ljubljana, Slovenia

Telephone number: 00386 1 786 9136

Website: http://www.arhiv.mkgp.gov.si/si/delovna_podrocja/program_razvoja_podezelja_2007_2013/vsebina_programa_razvoja_podezelja/mreza_za_podezelje/

Network office email: mreza-podezelje.mkgp@gov.si

Contact: Mr Matej Štepec

Email: matej.stepec@gov.si

Mission Statement and Strategic Objectives of the Rural Network

- The rural network's general objective is to engage stakeholder through the exchange of information, experience and know-how between all players, rural areas, administrations and organisations involved in the rural development within Slovenia and the EU.
- The specific aims of the rural network are:
 - Communication - Providing two-way information on rural development;
 - Cooperation - Promotion of cooperation, networking and good practices exchange;
 - Training – Increase of human capacity at rural stakeholders.

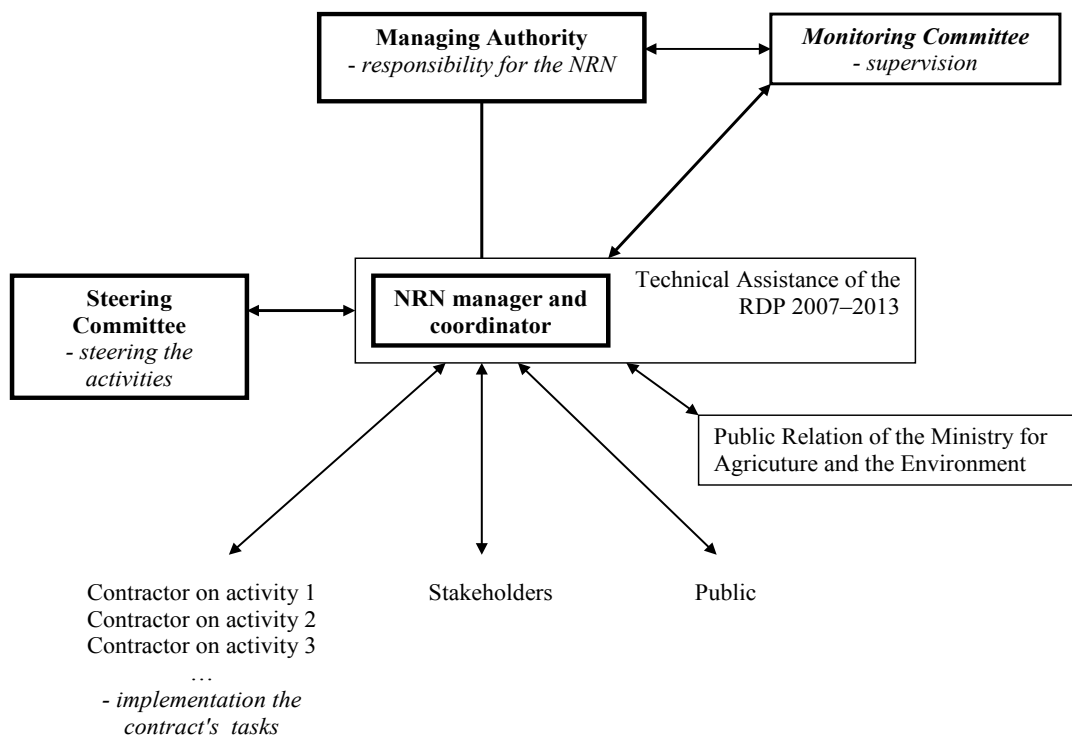
Participants in the Rural Network

- The membership in the Slovenian NRN is an on-going membership open to public sector, stakeholder organizations and individuals: everyone can fill the registration form (http://rkg.gov.si/BMZP/?lang=en_US#register) and become a member of the network.

Network Structure

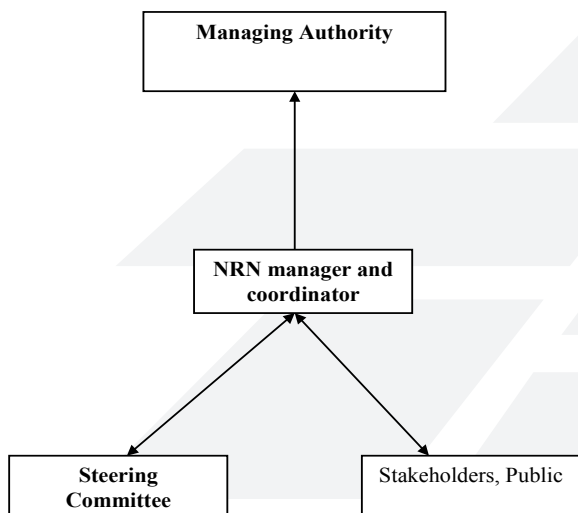
- The Network Support Unit (NSU) is established within the Managing Authority.
- The NSU is not delegated to a ministerial agency and is not outsourced.
- The network doesn't include regional NSUs, but it cooperates with so called INFO Points, which operates under The Chamber of Agriculture and Forestry. INFO Points provide information on RDP 2007-2013 open calls to the stakeholders.
- NSU's human Resources include:
 - One full-time person.

- Network's organigram:



Network Management

- The management decisions in the network involve formal decision-making processes and the final formal approval comes from the MA.
- The NSU assists this decision-making process by organising the meetings, questionnaires etc. In order to ensure the participation of stakeholders and the Steering Committee to the creation of proposition.
- Flow chart of the decision making processes within the Network Support Unit, Managing Authority and other relevant bodies:



Network Budget for the period 2007–13

Network budget		Budget breakdown	
	€		€
Total network funds (Public Cost)	1.200.356	Total Network funds (Public Costs)	1.200.356
National co-finance	300.089	Work plan resources	960.285
EAFRD	900.267	Network running costs	240.071
EAFR Co-financing %	75 %	Others (if appropriate)	/