

Name of Rural Network

National Rural
Network Malta
(NRN Malta)



Contact Details

Address: Block A, Luqa Road, Qormi, QRM 9075, Malta

Telephone number: (00356) 2292 4269

Website: www.mrra.gov.mt/ma; <https://secure2.gov.mt/mrra-ma/national-rural-network?l=1>

Network office e-mail: rdd.mrra@gov.mt

Contact: Ms Maria Carla Ciscaldi

Email: maria-carla.ciscaldi@gov.mt

Mission Statement and Strategic Objectives of the Rural Network

- The Maltese National Rural Network aims at supporting the implementation and evaluation of rural development policy through communication and exchange of knowledge, information and good practices at regional, national and EU level.
- Specifically, the MNRN aims at:
 - bringing together rural stakeholders;
 - developing and enhancing channels of communication through information activities;
 - exchanging experiences and good practices;
 - stimulating dialogue between rural stakeholders;
 - improving the overall performance and success of the Rural Development Programme and its evaluation;
 - enhancing the bottom-up approach;
 - assisting Local Action Groups through training programmes, inter-territorial and trans-national cooperation initiatives.

Participants in the Rural Network

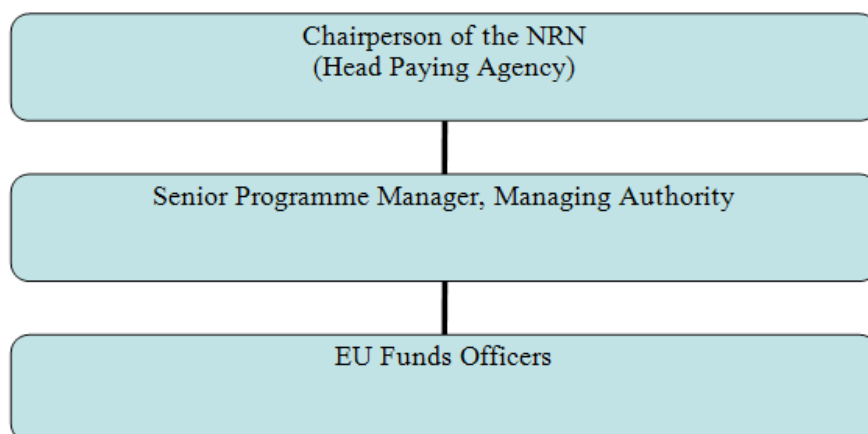
- The network is characterized by a formal membership and the composition of the MNRN is determined by the Managing Authority.
- The NRN is composed of several stakeholders from various agricultural sectors and representatives from a number of public organisations.
- The membership is not open to individuals but members are all representatives of organisations, cooperatives, LAGs, or public bodies.
- The membership is pre-determined but it has been restructured to ensure that National Rural Network Committee participants are fully committed.

Network Structure

- The Network Support Unit (NSU) is established within the Managing Authority, it is not delegated to a ministerial agency and it is not outsourced.
- The network doesn't include regional NSUs.
- The NSU's Human Resources include 7 MA officials contributing to the implementation of the NSU.

Network Management

- The management decisions in the network include less formal decision-making processes.
- The NSU assists this decision-making process by doing all the preparatory work, research and coordination prior to decision making.
- Flow chart of the decision making processes:



Network Budget for the period 2007–13

Network budget	€	Budget breakdown	€
Total network funds (Public Cost)	500.000	Total Network funds (Public Costs)	500.000
National co-finance	375.000	Work plan resources	100.000
EAFRD	125.000	Network running costs	400.000
EAFR Co-financing %	75 %	Others (if appropriate)	/